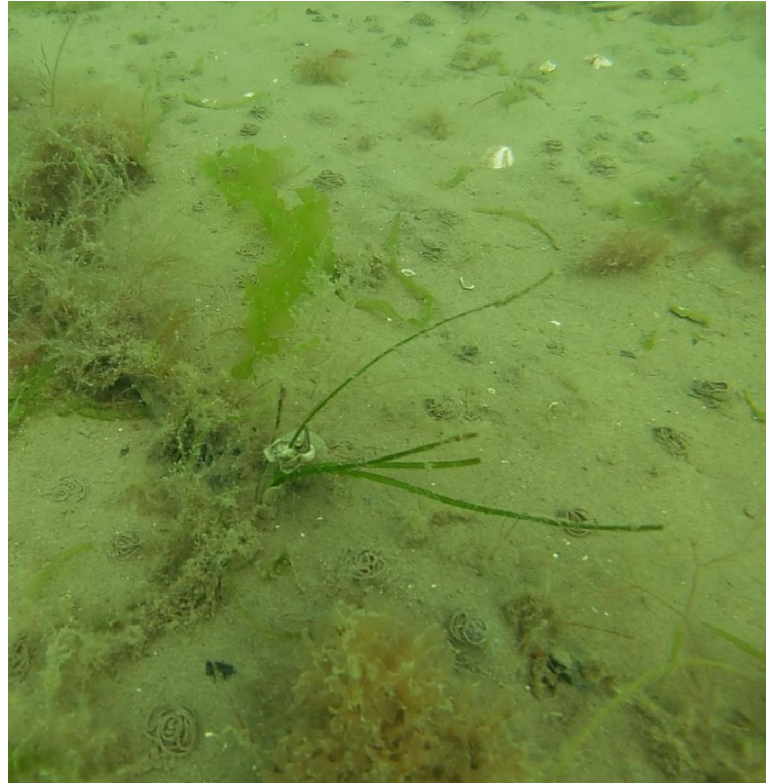


## Seagrass progress

Early June – seedlings emerging

Observations difficult due to Covid19 initial restrictions on SCUBA diving

Planned SCUBA diving assessment on 29<sup>th</sup> July



## Seagrass progress

Requirement of WG/NRW marine licence to cut the ropes to reduce any entanglement concerns before boating season  
Early June – Ropes were cut



## Seagrass progress

Next steps:  
Monitoring of current seedlings  
Further seed collections  
Completion of seed planting in Winter 2020



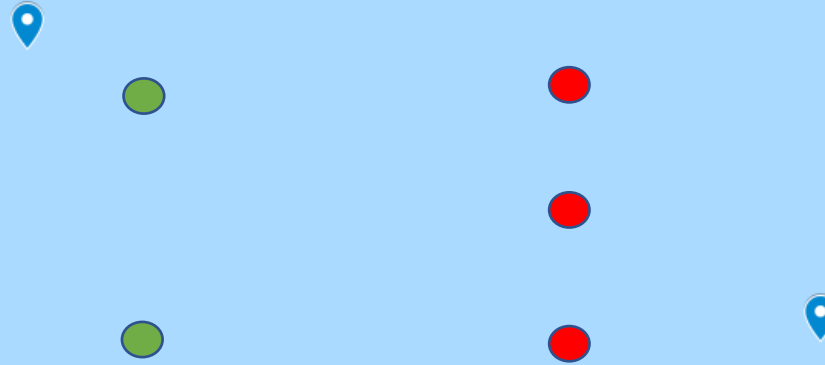
# Moorings



## General consensus from feedback:

Three boat moorings

Two markers



Milford Haven

## General consensus from feedback:

No compulsory charging - free at point of use

Some interest in collecting voluntary donations for local Dale community use (e.g. childrens environmental education activities) (could be run through 'collection tin' on the bar and/or through a Project Seagrass webpage)

## Moorings

## Timelines

- Sufficient funds currently available to run this for up to 7 years (inc maintenance)
- Will attempt to convince Port Authority to waive fees
- Swansea University happy to pay for continued insurance for that duration
- Need to confirm locations in order to get Crown Estate and MHPA approvals
- Aim to complete their deployment by end of season